



# PROTAL™ PROTECTIVE LIQUID COATINGS

FULL RANGE OF BRUSH, ROLLER AND  
SPRAY APPLIED COATINGS

COATINGS FOR:  
Pipeline Field Joints  
Pipeline Maintenance & Rehabilitation  
Fittings

Tie-ins  
Fabrications  
Holiday Repairs & Cadwells





## FEATURES:

- Easy to apply (brush, roller or spray)
- Fast cure
- High build
- Outstanding cathodic disbondment results
- Excellent adhesion (compatible with FBE coated pipe)
- High abrasion, gouge and impact resistance for directional drilling applications
- 100% solids (no solvents)
- Compatible with cathodic protection currents

## PROTAL 7200™



### High Build, Fast Cure Pipeline Coating

A VOC free, 100% solids, two-part epoxy coating specially formulated to complement FBE coated pipe. A high build liquid coating that can be brushed or sprayed applied in a shop or in the field up to 60 mils in one coat.

## PROTAL 7125™



### Fast Cure, Low Temperature Pipeline Coating

Formulated to be applied to colder substrates at colder ambient temperatures -4°F (-20°C). A high build liquid coating that is brushed or sprayed applied in one coat to many areas during winter applications.

## PROTAL 7900HT™



### High Temperature Pipeline Coating

A VOC free, 100% solids, two-part epoxy coating for pipelines operating at temperatures up to 250°F (121°C) with intermittent temperatures up to 300°F (150°C). Cures fast to allow for quick backfill when applied to substrates with higher temperatures.

## PROTAL 7700™



### Environmentally Friendly Pipeline Coating

A fast curing, VOC and Nonylphenol free two-part pipeline coating. The coating has outstanding flexibility, abrasion, gouge and impact results.

## PROTAL 7300™



### Moisture Tolerant Pipeline Liquid Coating

A VOC free, 100% solids, two-part epoxy coating specially formulated to coat dry, damp or wet surfaces. Can be applied to sweating pipelines above or below ground.

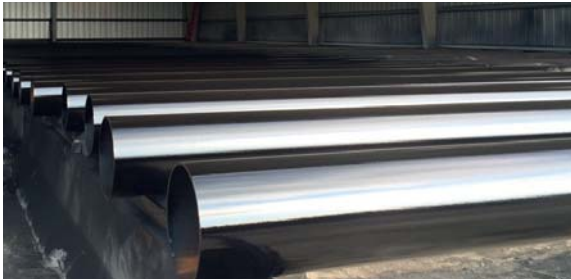
## PROTAL ARO™



### Abrasion Resistant Pipeline Coating

A VOC free, 100% solids, two-part epoxy coating to be used over FBE as an abrasion resistant overcoat. Can be easily brushed or spray applied with a 3:1 ratio at 50 mils in one coat.

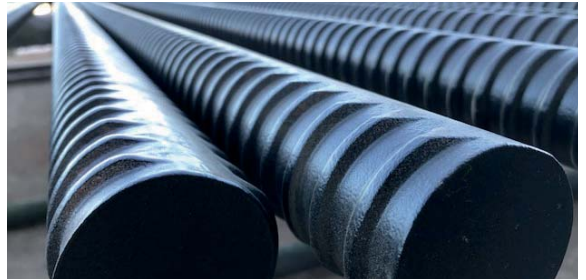
## PROTAL 600 CTE™



### High Build Coal Tar Epoxy

A two-part high build coal tar epoxy that can be applied up to 26 mils wet (19 mils dry) in one coat. Designed to coat steel piles, sheet piles, reservoirs, non-potable water pipelines, treatment / storage tanks, and other aggressive applications.

## PROTAL 600 CTE LOW VOC™



### Low Volatile Organic Compound Coal Tar Epoxy

A two-part high build coal tar epoxy that has low VOC's. Designed to coat steel piles, sheet piles, reservoirs, non-potable water pipelines, treatment / storage tanks, and other aggressive applications.

## PROTAL 650 CTR™



### Environmentally Friendly CTE Alternative

A two-part product formulated to replace coal tar epoxy. Based on polyamide chemistry and designed as an environmentally friendly alternative to coal tar epoxies.

## CARTRIDGES (COATING & REPAIR)



### Convenient Sized Cartridges for Protal Products

Denso provides cartridges in a range of sizes from 50ml to 1000ml. To be used for spray applications or repairs.



Ver 2002.05



## DENSO NORTH AMERICA

### USA

9710 Telge Road  
Houston, Texas 77095  
Tel: 281-821-3355  
info@densona.com

### CANADA

90 Ironside Crescent, Unit 12  
Toronto, Ontario M1X 1M3  
Tel: 416-291-3435  
sales@densona-ca.com

[www.denson.com](http://www.denson.com)



A MEMBER OF WINN & COALES INTERNATIONAL