

SeaShield Cartridge Gun



600 ml Cartridge Gun

Used to apply SeaShield FX-70TNG Epoxy Adhesive into the tongue and groove areas of Fiber-Form jackets. Comes in both Manual and Pneumatic versions.

Mixing Tips 9 Inches



Mixing Tips for SeaShield Cartridge Gun

Attaches to the SeaShield FX-70TNG Epoxy Adhesive 600 ml cartridges to achieve proper mixing of the product when insert to the TNG of Fiber-Form jackets.

SeaShield FX-70TNG Epoxy



Adhesion for Fiberglass Tongue & Grooves

Designed for use with the SeaShield Fiber-Form jackets that require adhesion bonding between fiberglass forms.

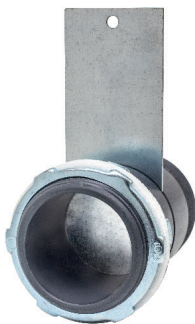
SeaShield Backer Rod



Compression Seal for Fiber-Forms

Bottom compression seal plug for fiber-forms during the pumping and pouring phase of SeaShield grouts to keep them in place prior to curing.

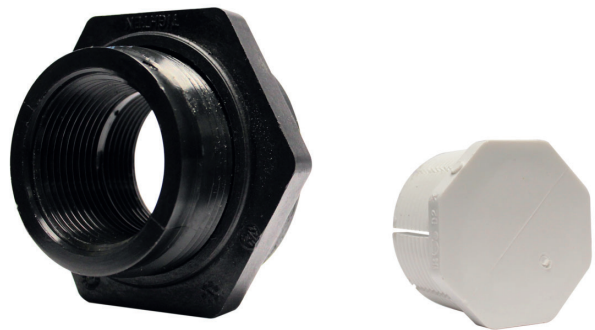
SeaShield Gate Valve



Pump Port with Slam Gate for Grout Distribution

A stay-in-place injection port for fiber-forms used to pump in SeaShield grouts and prevent grout from escaping when removing the pumping hose.

SeaShield Injection Ports



Grout Distribution Threaded Ports

Used in order to provide even distribution of the grout for the SeaShield Series 400 and 500 System. Can easily be installed during field application.

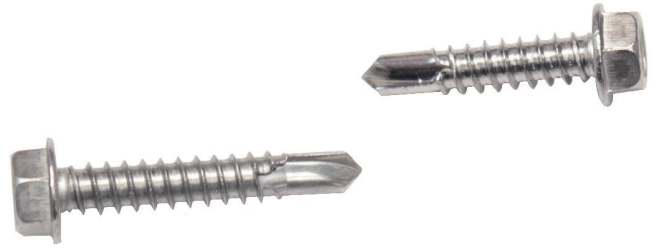
SeaShield Inspection Ports



Optional Inspection Accessory

The patented Inspection Ports are used with the SeaShield Series 2000HD & 2000FD System to monitor corrosion rate without having to remove the jacket.

316 SS Hex Head Screws



Stainless Steel Screws

Used to install and secure the fiber-glass forms for steel, concrete, and timber pile protection system for SeaShield Series 500.

M-10 Nuts, Bolts & Washers



Stainless Steel Nuts, Bolts & Washers

Used to install and secure the fiber-glass forms for the timber pile protection system for SeaShield Series 2000HD.

SeaShield C-GRID® Spacers



Plastic Spacer

Attaches the C-GRID® 450 in place so it does not come into contact with the pile or SeaShield Series 400 fiber-form jacket. This allows the grout to be injected properly.

SeaShield Stand-Offs



Fiber-glass Spacer

Used to provide an annulus void between the pile and jacket for the SeaShield Series 500 System.

Nylon Bolts



Bolt for Fiberglass Jackets

Used to install and secure the fiber-glass jacks for the SeaShield Series 500 System.

Hose & Pump Equipment Cleaner



Equipment Cleaner

Pumping equipment is best cleaned with SeaShield Equipment Cleaner after pumping SeaShield Grouts.

Hose & Pump Equipment Lubricant



Priming Solution

Used prior to pumping SeaShield Grouts to make sure there is enough force to pump the grouts efficiently.

DENSO, INC.

USA

9710 Telge Road
Houston, Texas 77095
Tel: 281-821-3355
info@densona.com

CANADA

90 Ironside Crescent, Unit 12
Toronto, Ontario M1X 1M3
Tel: 416-291-3435
sales@densona-ca.com

www.densona.com



A MEMBER OF WINN & COALES INTERNATIONAL